



4 Bedroom - 2 1/2 Baths - 2nd Floor Master Suite - 3,064 sq ft Living Area

SCHAFFER

Website: www.rkcustomhomes.com

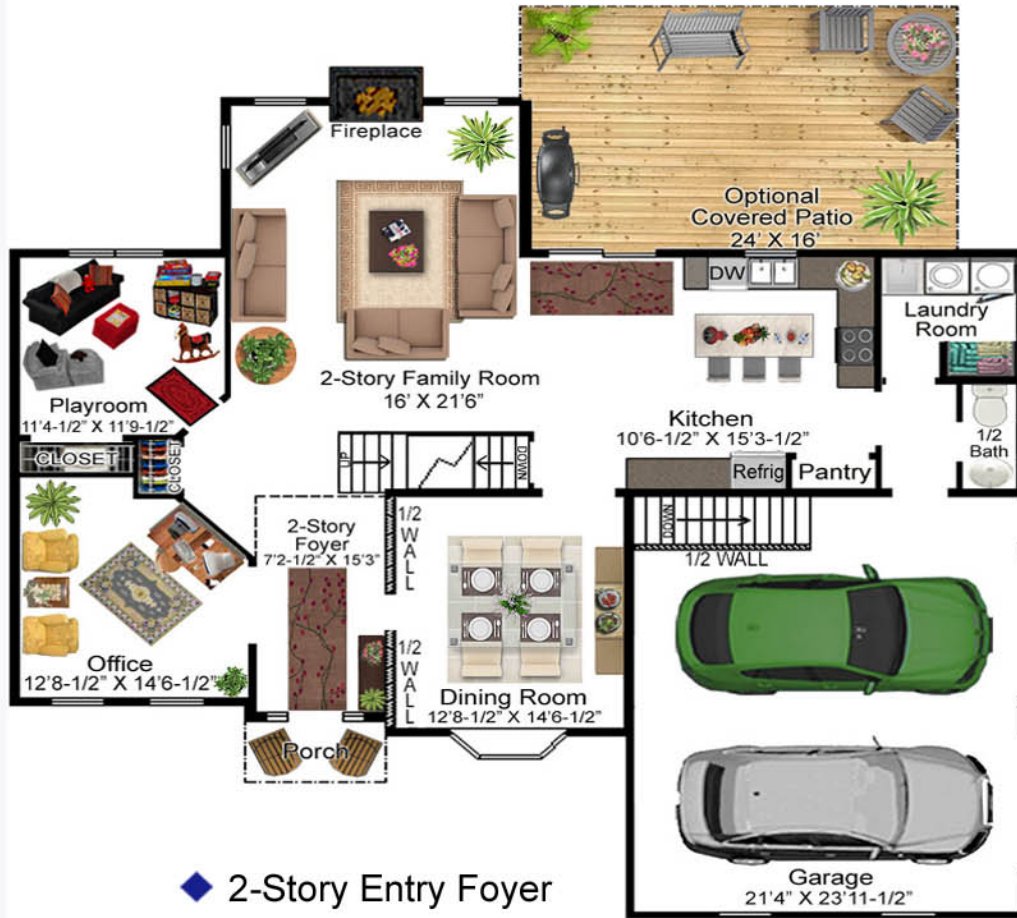


Custom Homes

SCHAFFER - Living Area 3,064 sq ft

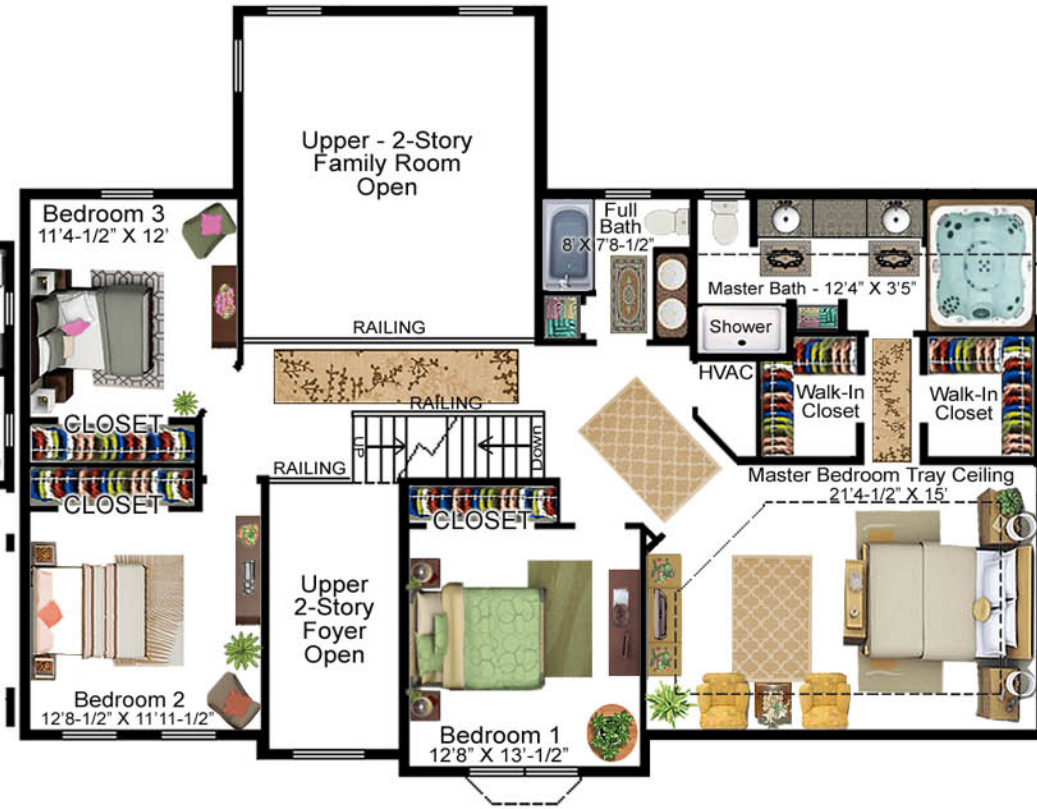
Website: www.rkcustomhomes.com

FIRST FLOOR - Living Area 1,588 Sq Ft



- ◆ 2-Story Entry Foyer
- ◆ Spacious Open Concept for Kitchen, Breakfast, & 2-Story Family Room
- ◆ 1st Floor Office
- ◆ 2 Car - Side Entry Garage

SECOND FLOOR - Living Area 1,476 Sq Ft



- ◆ 4 Bedrooms
- ◆ 2 1/2 Baths
- ◆ Spacious Master Suite with Tray Ceiling
- ◆ Large Walk-In Closets
- ◆ Lavish Master Bath

R&K

Custom Homes

All sizes & dimensions are approximate. Window sizes, shapes & locations may vary. In the interest of continued improvement, R & K Custom Homes reserves the right to make modifications including, but not limited to features, designs, facades & pricing. Actual facades may vary slightly. Contract & specifications take precedence over the brochure.