



4 Bedroom - 2 1/2 Baths - 2nd Floor Master Suite - 2,578 sq ft Living Area

**BITTNER**

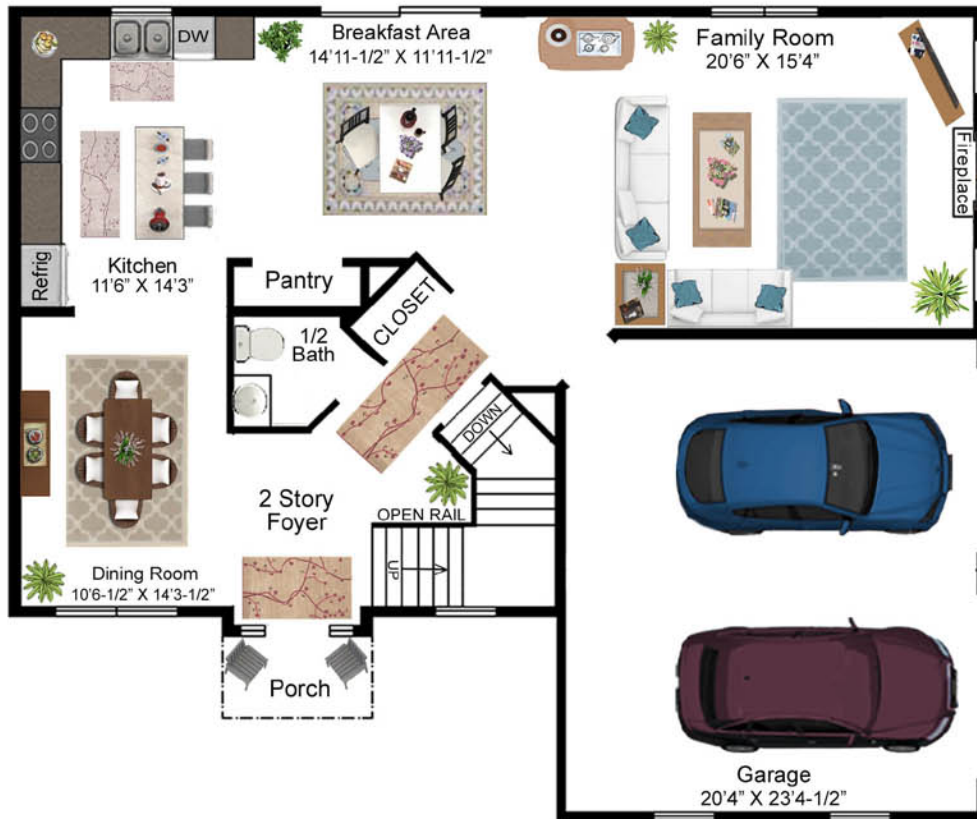
Website: [www.rkcustomhomes.com](http://www.rkcustomhomes.com)

  
Custom Homes

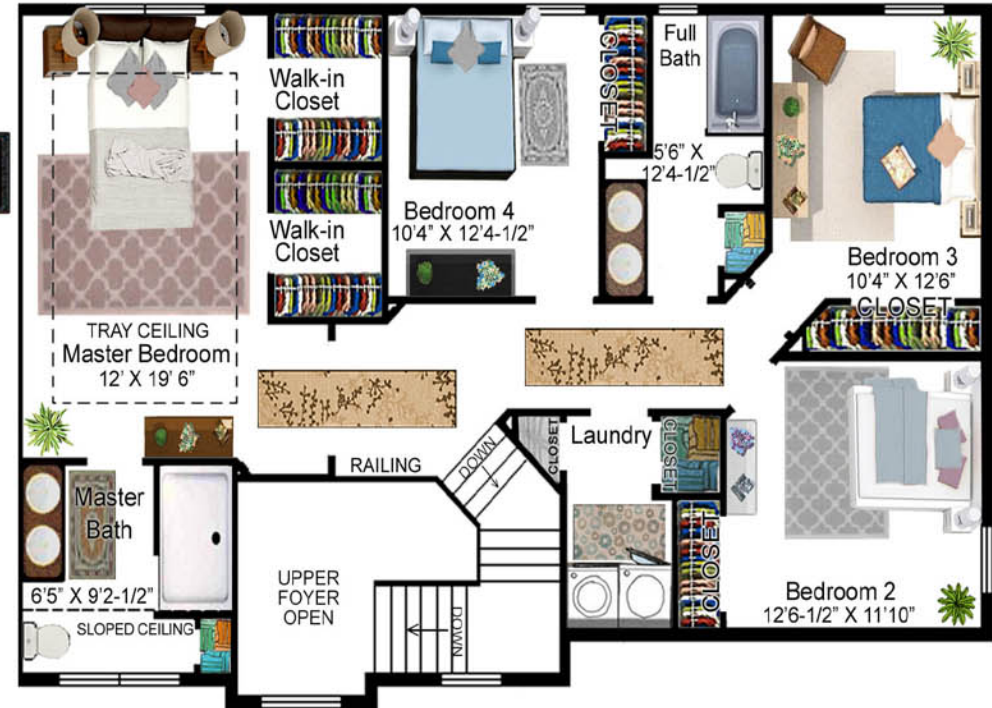
# BITTNER - Living Area 2,578 sq ft

Website: [www.rkcustomhomes.com](http://www.rkcustomhomes.com)

## FIRST FLOOR - 9' Ceilings - Living Area 1,172 Sq Ft



## SECOND FLOOR - Living Area 1,406 Sq Ft



- ◆ 2-Story Foyer Overlooks Dining Room
- ◆ Spacious Open Concept for Kitchen, Breakfast, & Family Room
- ◆ 2nd Floor Laundry
- ◆ 2 Car - Side Entry Garage

- ◆ 4 Bedrooms
- ◆ 2 Full Baths
- ◆ Master Suite w/Tray Ceiling
- ◆ 2 Walk-in Closets in Master Suite
- ◆ Master bath w/Clipped Ceiling

All sizes & dimensions are approximate. Window sizes, shapes & locations may vary. In the interest of continued improvement, R & K Custom Homes reserves the right to make modifications including, but not limited to features, designs, facades & pricing. Actual facades may vary slightly. Contract & specifications take precedence over the brochure.

**R&K**  
Custom Homes